

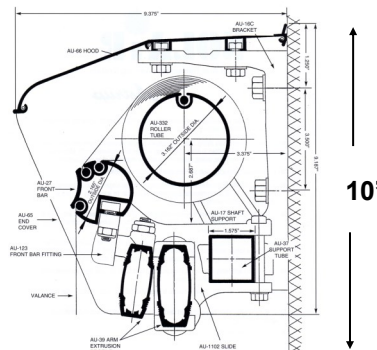


SUNSTAR® Retractable patio awning

The Sunstar® awning system is a retractable patio awning system built with quality components yet with economy in mind. You will find the most important features available to retractable awnings in the Sunstar®. The Sunstar® model also comes standard with many of options not normally associated as standard on other awning systems.

Type	Standard Frame Colors	Standard Widths	Standard Projections	Recommended Applications	Recommended Fabrics
Lateral Arm Awning	Mocha, White & Cream	Through 24'	6'8", 8'3", 10', 11'6"	Deck, Patio & Storefront	Sunbrella, Tempotest / Para, Sattler, & Recasens

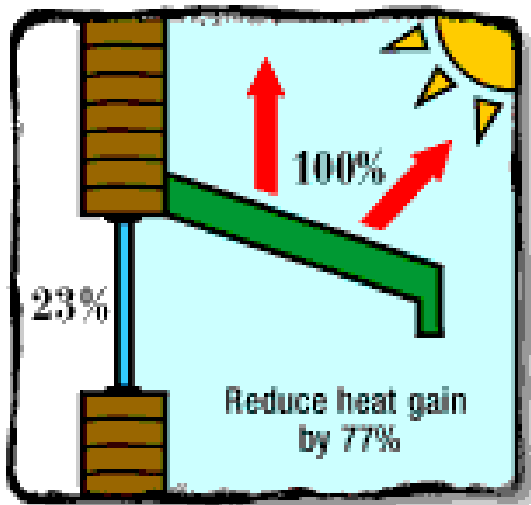
- Robust Lateral Arm Awning.
- Forged aluminum elbow and shoulder components.
- Double stainless PVC coated cable arm design for durability.
- 7:1 high quality worm gear for efficient operation.
- All aluminum extruded front bar, Torsion bar, and roller tube.
- Powder coated components and extrusions.
- A stop in the gear to prevent the fabric from over rolling.
- Stainless steel fasteners.
- Optional: One-piece aluminum hood system.
- Optional: Valance Plus.

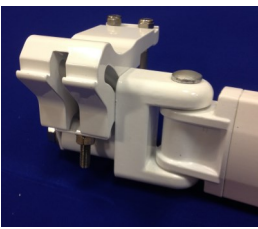


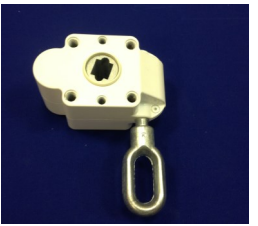


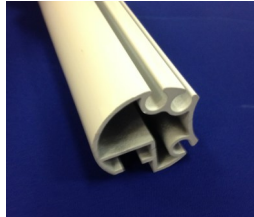


BENEFITS OF AWNINGS



- Reduces indoor temperatures and energy costs while keeping you cool on your deck or patio.
- Reduce heat gain inside by as much as 77% and reduce sunlight and glare through your window by as much as 94% (see Minnesota energy study).
- A Sunair awning keeps you cool on your patio or deck, but it also minimizes your exposure to the sun's harmful rays.
- A Sunair® retractable awning will increase your outdoor living area comfortably and efficiently at a fraction of the cost of a permanent addition



<u>SUNSTAR® MODEL FEATURES:</u>		<u>COMPETITION</u>	<u>SUNSTAR® BENEFIT:</u>
ARMS	 <p>All arm parts under stress are made of forged aluminum including the shoulder, elbow, and arm components.</p>	Others typically uses all Die-cast or extruded aluminum arm parts	Forged aluminum arm components are stronger than all die castings or extrusions resulting in a stronger awning against the elements.
FLEXIBILITY	 <p>Sunstar® uses only the strongest materials yet is engineered for flexibility with a unique two way movable front arm attachment.</p>	Most systems use a single front pin that only moves in one direction.	Our unique two way movable front arm attachment relieves strain, increases flexibility and strength in the arm which reduces damage.
ELBOW	 <p>The Sunstar® twin high quality stainless aircraft cable covered in a vinyl PVC sleeve.</p> <p>The hinge is triple angled with an elliptical cable radius.</p>	Typically the competition uses a single smaller cable which is not always coated. Most systems do not have this angle and the fabric rubs on the arms.	Twin covered cables are far superior to a single cable, as cable wear is reduced, allowing better arm and fabric tension and durability. The elliptical cable radius increases tension as the awning extends. The angles help keep the fabric from dragging on the arms.
GEARS	 <p>Sunstar® uses a heavy duty German 7:1 ratio worm gear with a stop.</p>	The competition often uses an inferior quality 7:1 gear without a stop	The German gear is of the highest quality available. The stop eliminates fabric damage due to over rolling.

<u>SUNSTAR® MODEL FEATURES cont.</u>		<u>COMPETITION</u>	<u>SUNSTAR® BENEFIT:</u>
PROFILES & PAINT		All extrusions and components are exclusively made of the highest quality aluminum. The extrusions and aluminum parts all electro statically powder coated.	The competition often mixes aluminum and steel profiles to save on cost. Competitors very often actually wet – lacquer the extrusions to save on cost. Aluminum extrusions are strong, yet will not corrode over time like steel. This equates to a longer lasting awning. Powder coating is more attractive and holds up better against the elements, resisting cracking and peeling.
FABRICS		Hundreds of 100% acrylic premium grade solid and striped fabric colors to choose from. You surely will find a fabric to suite your need and taste.	Sometimes the competition uses vinyl or a non acrylic fabric. Some companies use poor quality lighter thickness acrylics fabrics. Acrylic fabric is more attractive and breaths better than vinyl. Vinyl traps heat and will crack over time. Acrylic fiber is also resistant to fading and mildew and has a water repellant Teflon coating.
THREAD		All fabrics are sewn with Tenara® thread. This thread is manufactured from GORE-Tex, and is clear and nearly invisible.	The competition typically uses a synthetic thread. Often the competition cuts corners and uses only a white thread which is very visible on the fabric. Tenara® thread is made of Teflon and will not deteriorate from exposure to the elements. The clear thread is nearly invisible on most fabric colors.

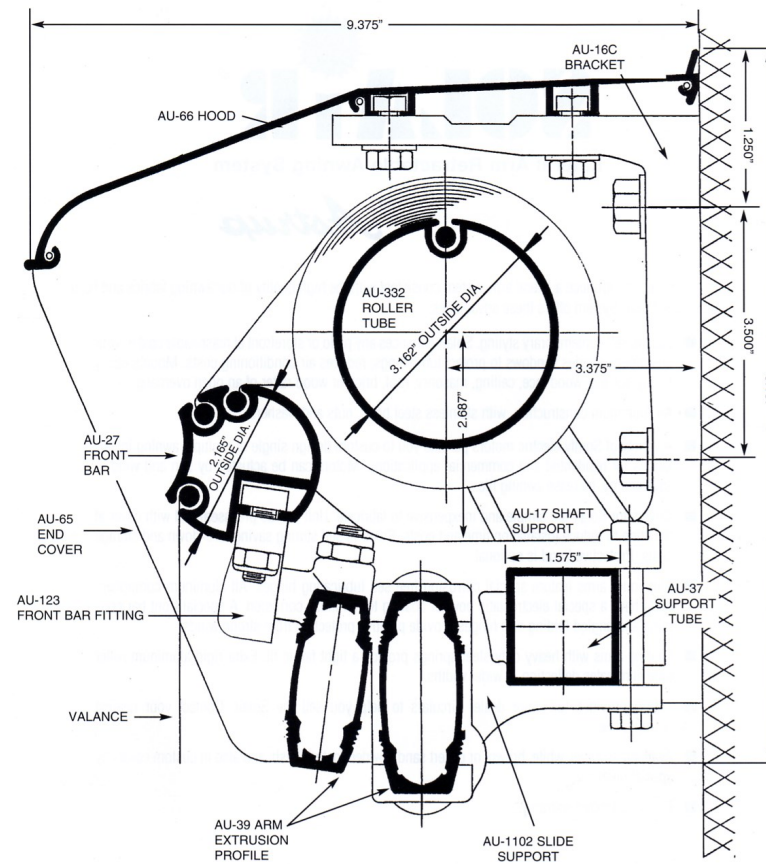
Note: Available features will vary by model

THE SUNSTAR IS THE CLEAR CHOICE!



SUNSTAR® Cross section

9.375"



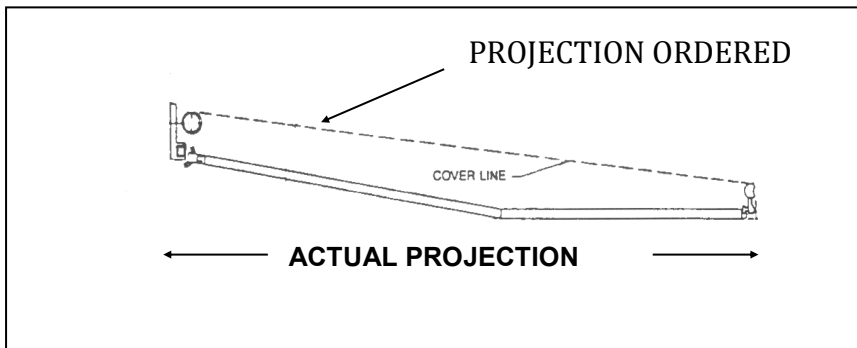
10" with hood
8" without hood

MEASURING A LATERAL ARM AWNING:

WIDTH:

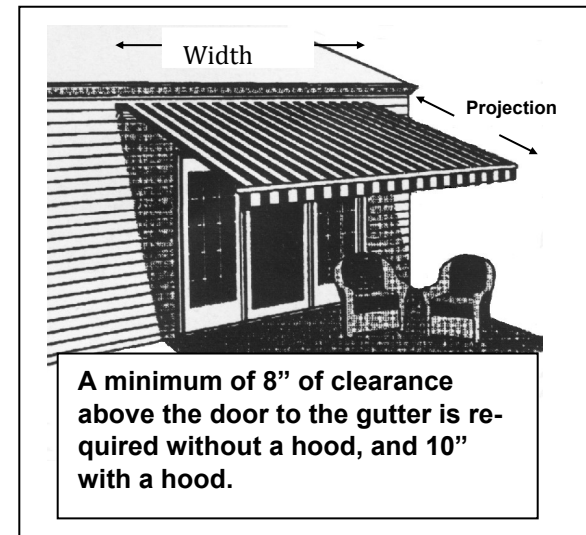
The width is based upon the size of the deck. Due to the large sizes of some decks it is not always necessary to cover the entire deck. Make sure the wall is free of down spouts, chimneys and electrical conduit. Any object protruding out from the wall will interfere with the roller mechanism. Note the hood is always 1" wider than the width of the awning frame. The fabric width is always 5" less than the awning frame on units up to 20' wide, and 5 1/2" less on units over 20' wide. If the deck faces the West, then projection is important to consider. If the deck faces South, then width is important to consider.

The roller assembly of the SUNAIR® measures 8" high without a hood and 10" high with a hood. Be certain that you have at least 8 – 10" of unobstructed mounting surface (see sketch below right)



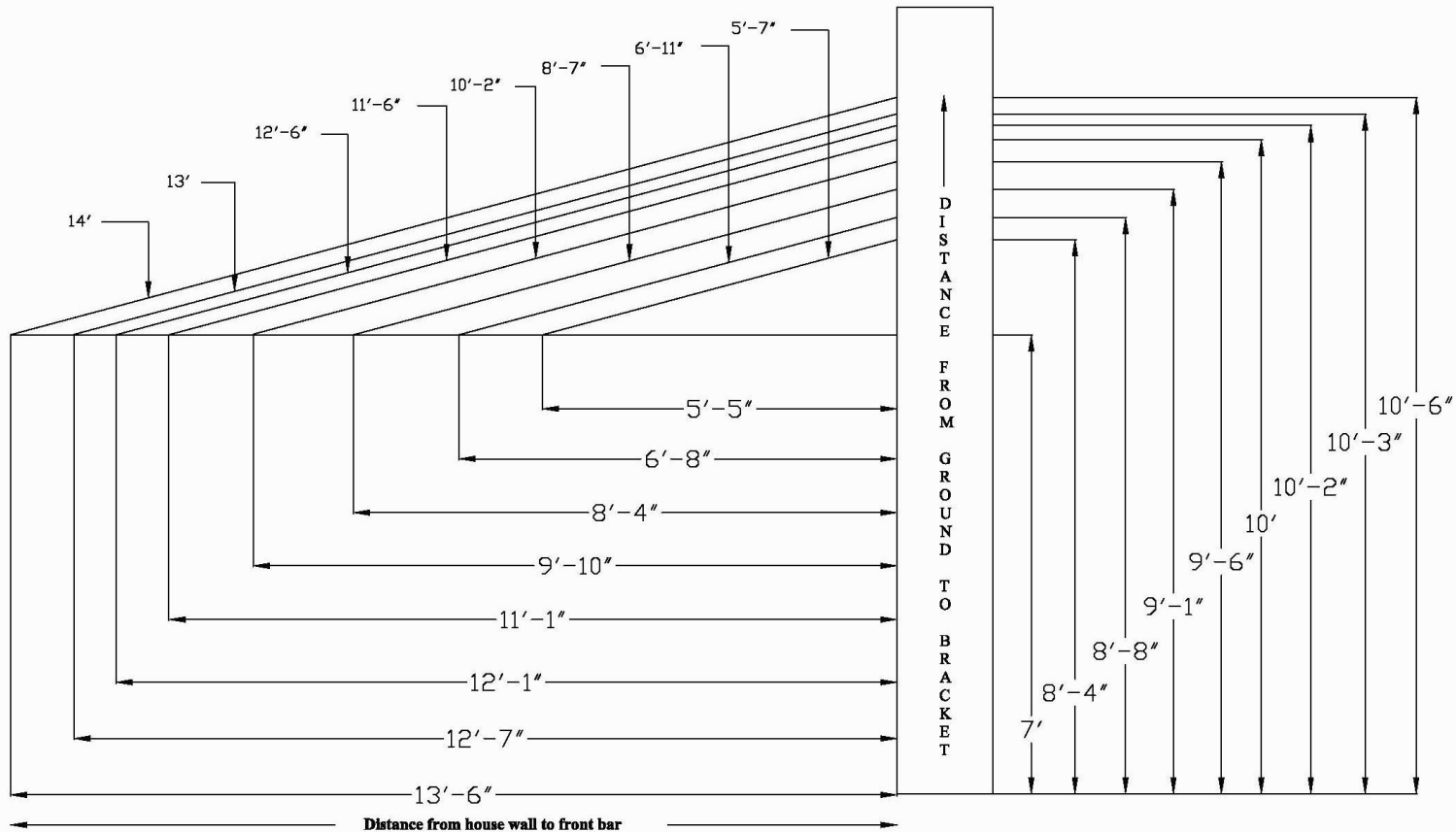
PROJECTION:

Determine the ground clearance above the door or window and then determine the desired projection. Refer to the pitch chart on next page for the ideal mounting height and pitch for the desired projection. The greater the pitch on the awning the less projection it will have (see pitch chart). When the awning is extended the front bar should be at least 7 ft. off the deck or patio. On a commercial installation the distance from the ground to the front bar should be at least 8 ft. depending on local codes. The pitch chart indicates that for every 12" of projection of the awning the mounting brackets should be located 3" higher than the front bar when the awning is extended (3/12 rule).



The SUNAIR® Lateral Arm Awning is designed for residential decks, patios and commercial storefronts. Smaller projections should be used for a storefront awning. The awnings are designed for sun protection; they are not designed to withstand wind or heavy rain and should not be sold for such purposes (see warranty).

PITCH CHART AND IDEAL MOUNTING HEIGHT

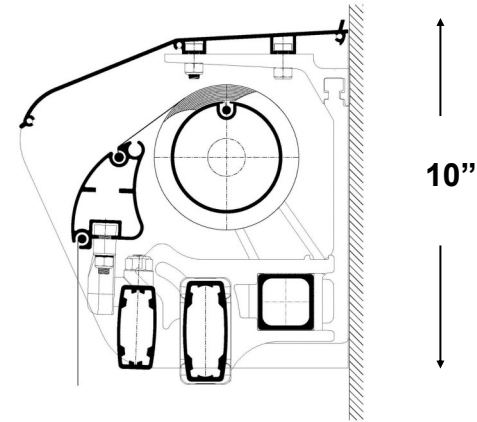


For example: The brackets on an awning with 10' projection needs to be mounted 9'6" from the ground on a residential installation, $10' \times 3" = 2'6"$ & $2'6" + 7' = 9'6"$). Because the ideal pitch may not always be attained, it is possible to install the awning lower than the ideal pitch. While the "3/12" rule is ideal, it is perfectly fine to install the awning with a 2/12 pitch. A 1/12 pitch is absolute minimum. Maximum pitch is 45°.

Note: A good rule of thumb is never to install a Lateral Arm Awning below 8 feet at the top of the installation bracket. If only eight feet is attainable do not install an awning with more than 10'2" projection. If the installation height is too low or the desired projection is too great for the available space the awning may have to be installed on the roof (see the installation manual for each individual model).

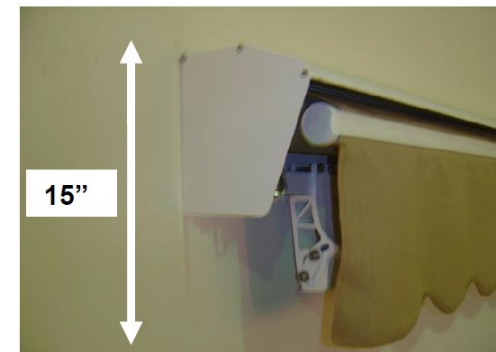
OPTIONS:

OPTIONAL HOOD



Sunair® offers an optional aluminum one piece hood, made from the highest quality aluminum. The hood protects the fabric when the awning is in retracted position. With the aluminum hood, your awning is always automatically covered when you retract it. If the awning is mounted under an overhang protruding at least 10", then the optional hood is not needed.

SUNAIR® XP CROSSOVER ARMS



If the area on the wall to mount the awning on is very narrow, but a larger projection is desired, the Sunair model with "XP Crossover" arms offers the ability to overlap the arms in order to fit larger projection arms onto a narrow frame. This cross-arm version is available when the desired projection exceeds the width. The roller assembly is 15" tall requiring a larger 12" valance.

VALANCE PLUS



The Valance Plus is an optional roll down drop valance. This valance is great for extra shade on western exposures when the sun is low on the horizon. Valance height is 43" – 48" high depending on fabric chosen. This option is available motorized or manual. If motorized you need to upgrade to a Telis 4 multi channel remote.

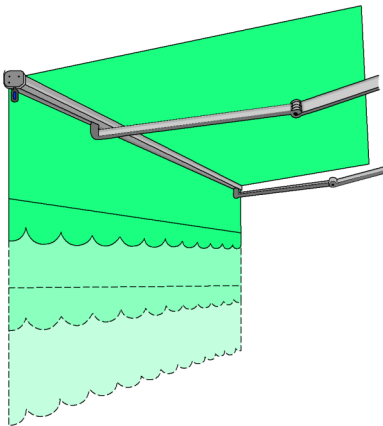
Available standard with Ferrari Soltis 86 or Recscreen 5000P mesh. You can also choose an acrylic fabric. Darker mesh fabrics will block the sun and also maintain some view through the fabric. Note: maximum allowable width on mesh

SUNAIR® MODEL:

- Maximum "projection" manual operation 13'
- Maximum projection "motorized" operation 11' 6"
- Maximum "width" of unit acrylic fabric 20'
- Maximum "width" mesh fabric 24'

SUNSTAR® MODEL:

- Maximum "projection" manual operation 10'
- Motorized not available
- Maximum "width" of unit acrylic fabric 20'
- Maximum "width" mesh fabric 24'



OPTIONAL LED KITS FOR YOUR LATERAL ARM AWNING

SOMFY LIGHT KITS



- Available in warm white and cool white colors.
- Kits available for arms on awning system.
- Compatible with the Sunea SOMFY manual override motor only.
- Uses a Dimmable remote lighting kit.
- Use a multi channel remote.
- Lights installed in the field by dealer.

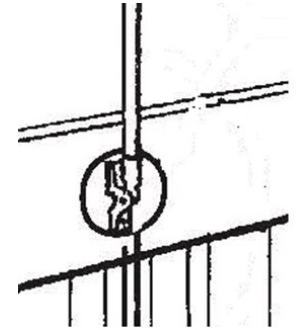
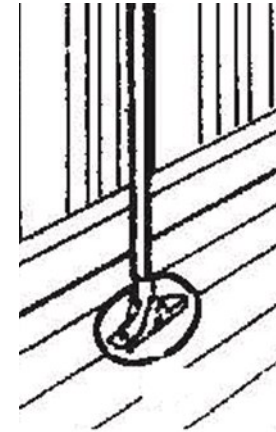
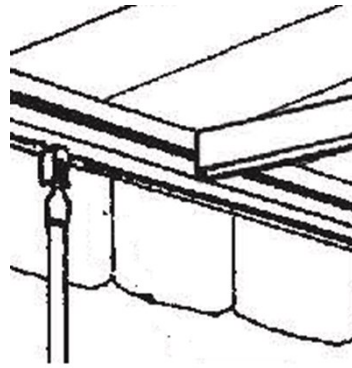
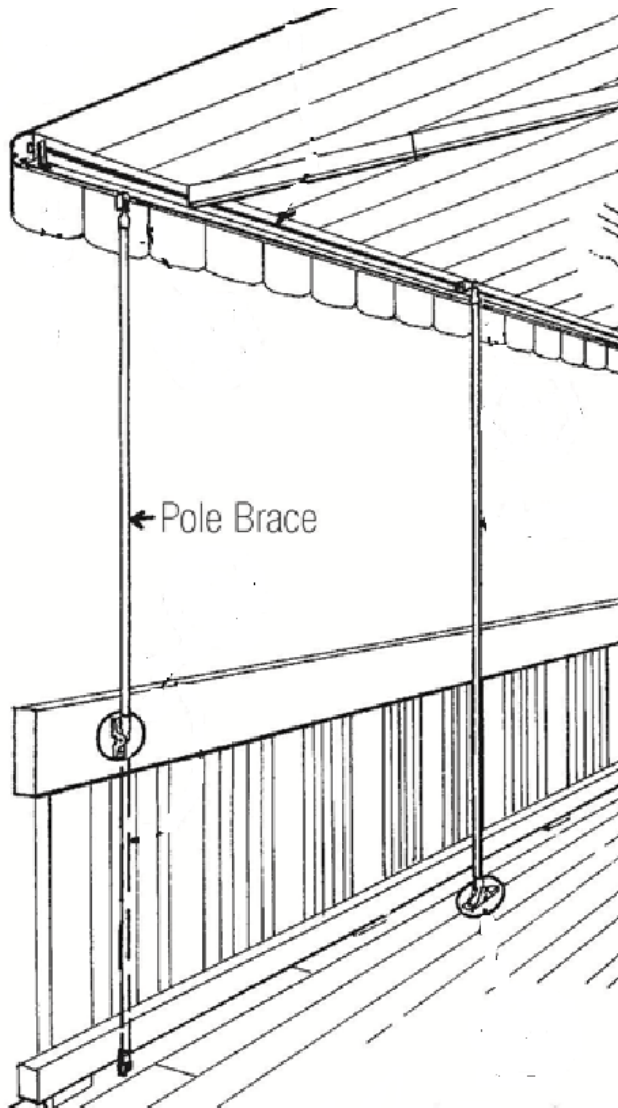
SUNAIR LIGHT KITS



5MM ILUMA™ LIGHT STRIPS

- Available in warm white color.
- Kits available for arms and front bar .
- Compatible with the Sunea SOMFY manual override motor and can be used with other motor systems as well.
- Uses a Dimmable remote lighting kit.
- Use a multi channel remote.
- Lights installed at the Sunair factory during assembly.

AU41 AWNING ASSIST BRACES



8 ft. Long

Minimum 2 posts needed per awning.

One (1) post per arm needed.

If 3 arms, 3 posts needed.

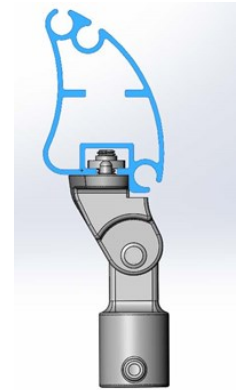
For Sunair®, Sunstar®, and Sunchoice® models only (Not for Suntube® model).

Must be released before operating awning.

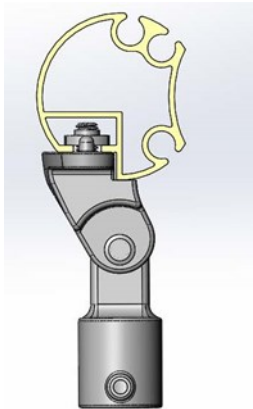
AU41 Available Colors:

White, Mocha, Ivory

Note: colors may not match exactly with awning frame.



Sunair® Front

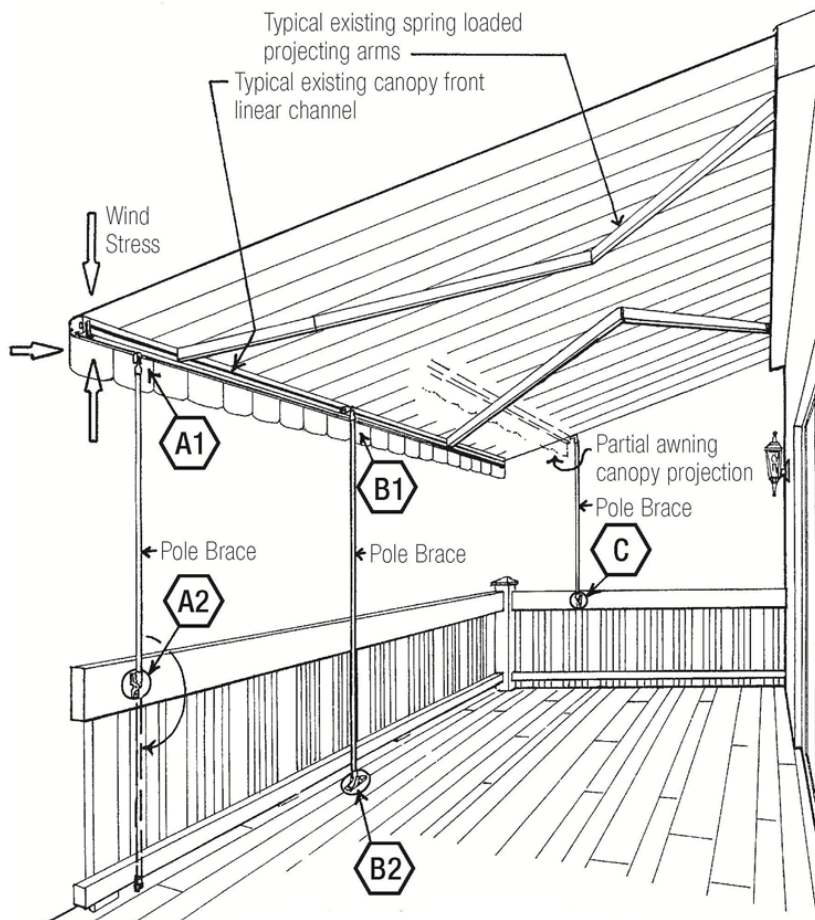


Sunstar® Front

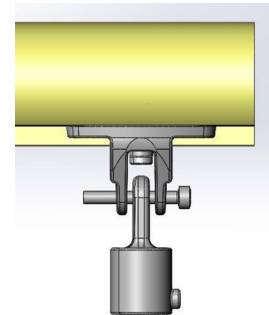
ASSIST BRACES cont.

Typical Installation of the manually operable pole brace to a typical existing awning canopy

- A1 Top end of pole brace secured to bottom slot channel of existing front linear aluminum extruded channel.
- A2 Lower end secured to a existing rail or wall.
- B1 Top end of pole brace secured to rear slot channel of existing canopy front linear aluminum extruded channel.
- B2 Lower end secured to a existing ground building surface.
- C During the partial projection of a existing awning canopy the lower end of pole brace may be secured to ground surface or side rail or wall.



8 ft. posts can be cut down to desired length.

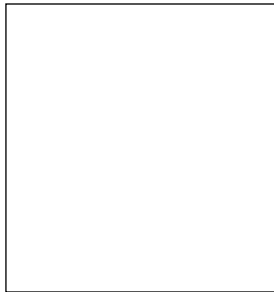


NOTE: The Assist braces provide added stability to a retractable awning when it is extended. Adding these posts does not make the awning into a stationary awning. There is also no guarantee the awning will not be damaged in wind. Damage to awning or property is NOT covered by the Sunair® warranty. Please see warranty and separate instructions for proper use of these posts.

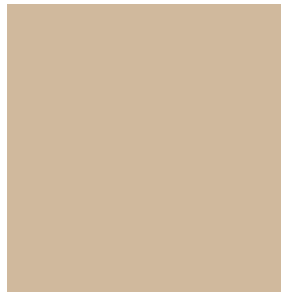
FRAME COLORS (STANDARD)

*Awnings & Screens**

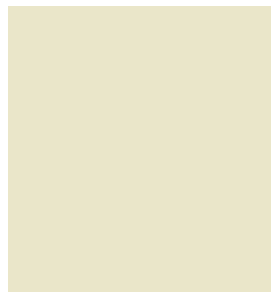
*Note: See each model technical page for available frame colors.



WHITE Gloss
Ral 9016



MOCHA
Semi Gloss



CREAM Gloss
Ral 1013



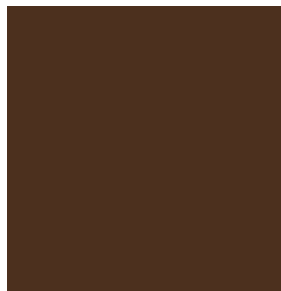
BLACK Gloss
Ral 9005



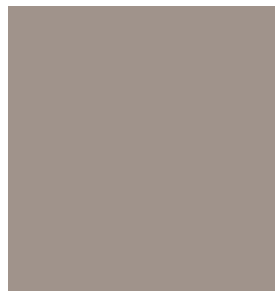
BRONZE
Coarse



GREY Gloss
Ral 7040



BROWN Gloss
Ral 8019

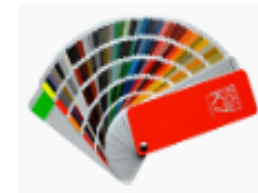


TAUPE Gloss
Ral 7030



GREEN Gloss
Ral 6005

OPTIONAL



**FULL RAL COLOR
RANGE / EXTRA COST**

NOTE: ACTUAL FRAME COLOR MAY VARY FROM DIGITAL IMAGES



TEMPOTEST
ITALIAN PERFORMANCE FABRICS



2018

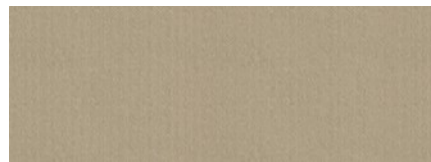
ACRYLIC FABRIC COLLECTION



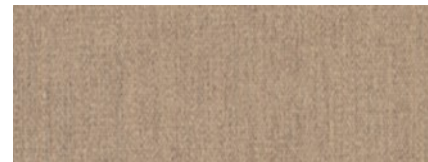
Fabric covers sewn with Tenara thread.



101 Elite Toast



102 Cappuccino



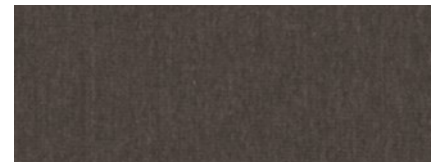
106 Toffee



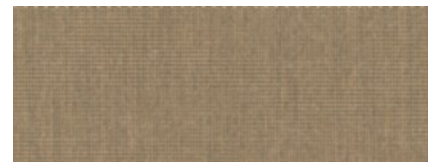
986/15 Textured Lt. Grey



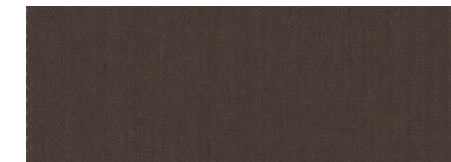
727/15 Textured Med. Grey



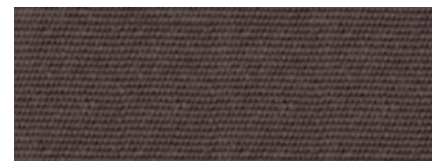
107 Textured Dk. Grey



986/106 Textured Beige



873/2 Textured Cocoa



97/84 Plum



407/3 Green Classic Tweed



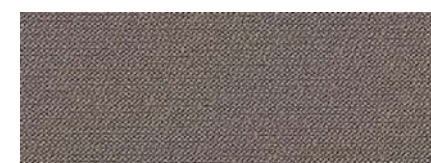
407/16 Moss Classic Tweed



407/14 Toast Classic Tweed



407/926 Grey Classic Tweed



926 Taupe Classic Solid



782/14 Beige Classic Solid



15 White



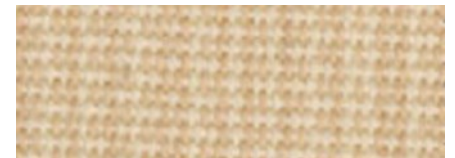
15/14 Raw



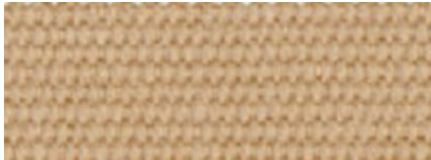
4015/91 Raw Speckled



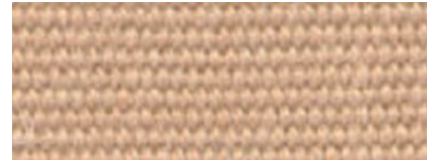
15/1 Beige



4215/15 Textured Tan



52 Tan



14 Toast



12 Yellow



53 Pale Peach



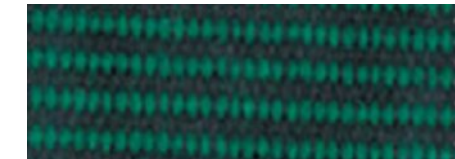
1302 Sage Tweed



7 Moss Green



5 Forest Green



407/6 Green Tweed



8 Medium Green



13 Ocean Blue



407/13 Blue Tweed



75 Navy Blue



87 Fancy Blue



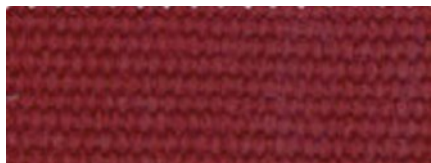
79 Grey



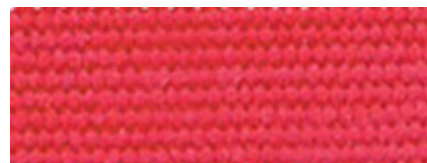
407/79 Pepper Grey



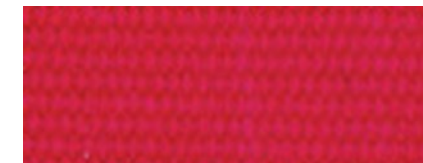
15/79 Stone



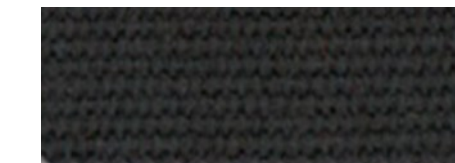
84 Dark Terracotta



426 Terracotta



11 Red



81 True Brown



73 Burgundy



407/11 Burgundy Tweed



24 Black



5374 Smoke / Grey Stripe



5370 Beige / Grey



35 Red / White



33 Forest Green / White



37 Yellow / White



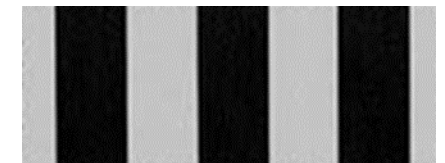
47 Brown / Stone



969 Grey Fancy Stripe



242 Grey / White



68 Black / Grey



439 Dark Grey / White



809 Cream / Green



878 Beige / White Speckled



116/15 Medium Blue / White



931 Green / Cream Wide



5347/58 Grey Wheat Multi



5348/58 Beige / Wheat Multi



**5349/930 Beige
/ Brown Classic**



636/14 Brown Elite Stripe



945/97 Beige Elite Stripe



946/58 Beige / Grey Classic



947/14 Pale / Beige Classic



949/91 Brown / Beige Classic



959/14 Beige / Toast Elite



959/84 Beige / Brick Elite



5001/73 Burg/Grey Graduated



1101 Beige / Stripe Fancy



636/84 Terracotta Graduated



639/99 Tan / Natural Fancy



1120 Brown/ Beige Fancy



5009/1 Beige / Tan Stripe



5009/14 Brown / Tan Stripe



5011/57 Tan / Brown Fancy



5072/86 Brown/Stone Fancy



5144/14 Pastel/Natural Fancy



635/11 Cranberry/Natural F.



5011/11 Brick/Natural Fancy



5167/11 Red / Grey Fancy



5304/15 Rose / Grey Fancy



5173/12 Yellow / Grey Stripe



636/12 Yellow Graduated



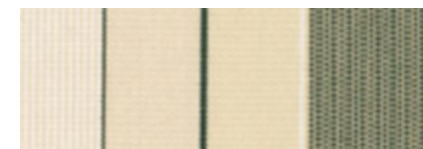
5118/62 Yellow / White Fancy



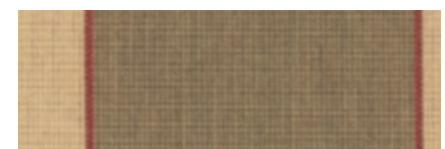
5009/12 Gold / Tan Stripe



1150 Rust / Green Multi



5349/5 Natural/Green Classic



5368/106 Toast/Grey / Rust



940/5 Green Elite Stripe



764/62 Green / Tweed Fancy



774/62 Green / Speckled Fancy



739/701 Sage / Beige Fancy



634/97 Green / Tan Fancy



635/8 Green / Stone Fancy



636/5 Green / Beige Fancy



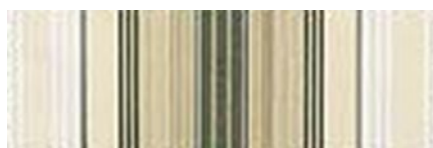
638/5 Green Grey Fancy



5001/1 Green Graduated



5001/7 Moss Graduated



5011/7 Tan / Green Fancy



5071/7 Natural/Moss Graduated



5167/5 Green / Grey Fancy



484/3 Green / Yellow Fancy



948/21 Pale / Blue Classic



951/92 Grey / Navy Classic



769/75 Cream / Blue Fancy



5167/2 Blue / Grey Fancy



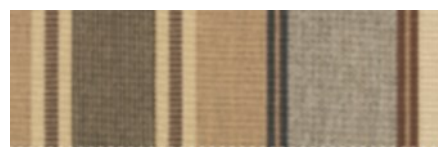
636/10 Grey / Blue Graduated



641/10 Blue / Beige Fancy



5001/13 Blue Graduated



5348/14 Beige / Grey Multi



5348/79 Grey / Slate Multi



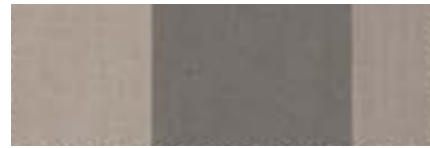
939/79 Yellow / Grey Elite



939/94 Grey Elite Stripe



950/24 Grey / Charcoal Classic



967/926 Grey/Charcoal Elite



634/51 Grey / Natural Fancy



633/79 Grey/ Black Fancy

BINDING



VALANCE STYLES



A



E Standard



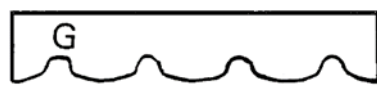
B



F



C



G

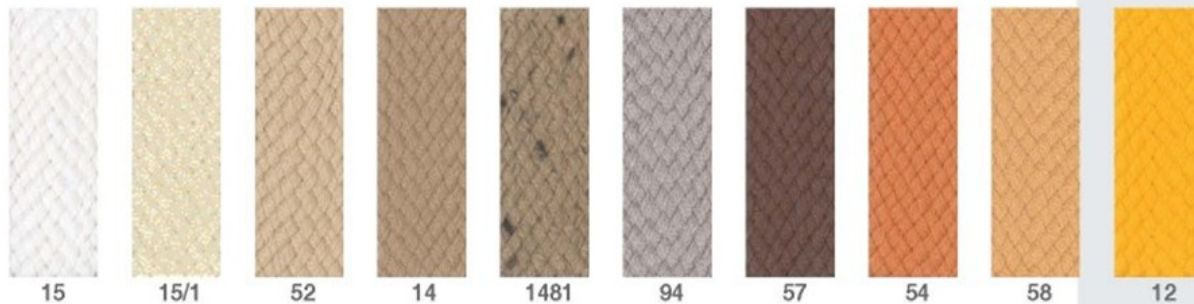


D

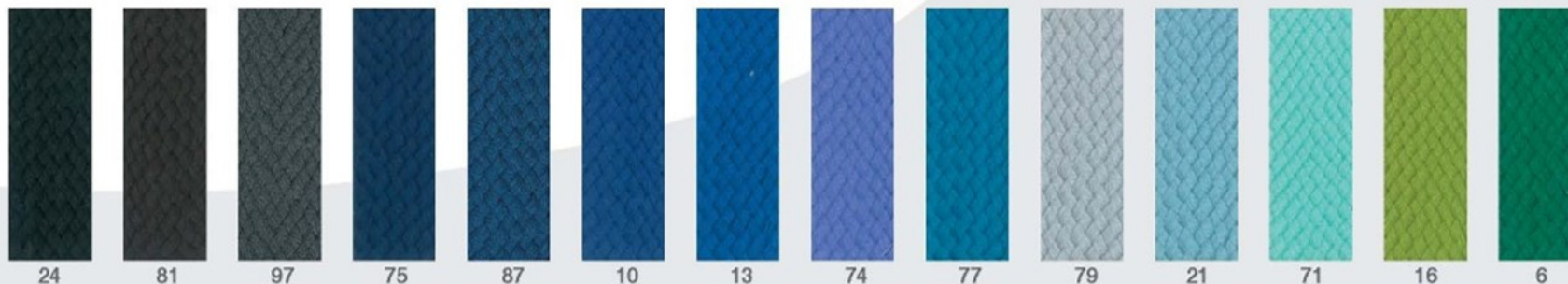
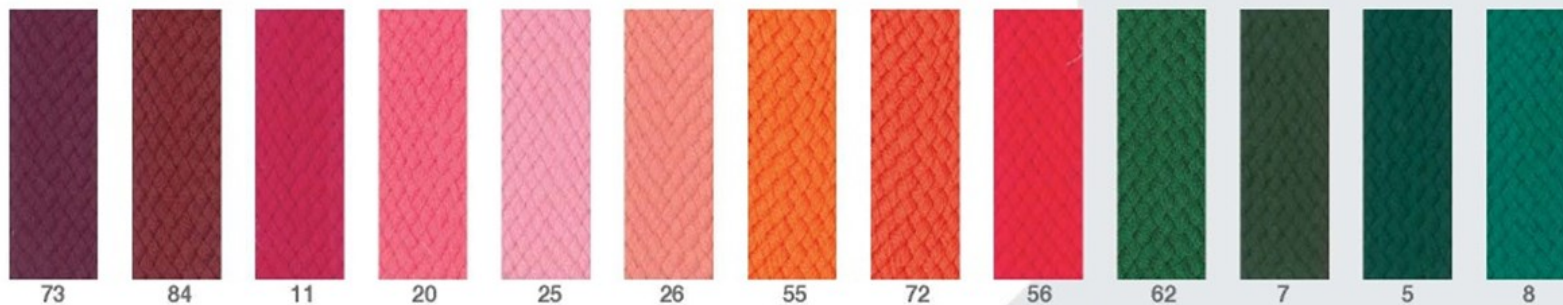


H

Standard valance styles are listed here. Some styles may vary depending on the pattern and where the stripes fall. If a custom valance is required, include a well-dimensioned sketch with the order as well as instructions on style. Our standard valance is "E", if no valance style is specified, we use "E".



PASSAMANERIA PER MANTOVANE | EINFASSBAND
 BINDING TAPE | GALON + BORDER | RIBETE



Colori e numerazioni sono identici alle tinte unite del Tempotest | Coloris et numération sont les mêmes que les unis du Tempotest

Colours and colour references correspond exactly to the Tempotest plains range | Die Farben bzw. die Farbnummer stimmen mit den Tempotest Uni-Farben überein

Colores y numeración son iguales que los lisos del Tempotest



Index Para / Tempotest Sunair Fabric collection

SOLIDS • TWEEDS • BLOCK STRIPES • FANCY STRIPES • GRADUATED STRIPES

Pattern	Description	Pattern	Description	Pattern	Description
101	Elite Toast	407/11	Burgundy Tweed	5118/62	Yellow/White Fancy
102	Cappuccino	24	Black	5009/12	Gold/Tan Stripe
106	Toffee	5374	Smoke / Grey Stripe	1150	Rust / Green Multi
986/15	Textured Lt. Grey	5370	Beige / Grey	5349/5	Natural / Green Classic
727/15	Textured Med. Grey	35	Red / White	5368/106	Toast / Grey / Rust
107	Textured Dk. Grey	33	Forest Green / White	940/5	Green Elite Stripe
986/106	Textured Beige	37	Yellow / White	764/62	Green /Tweed Fancy
873/2	Textured Cocoa	47	Brown / Stone	774/62	Green / Speckled Fancy
97/84	Plum	969	Grey Fancy Stripe	739/701	Sage / Beige Fancy
407/3	Green Classic Tweed	242	Grey / White	634/97	Green / Tan Fancy
407/16	Moss Classic Tweed	68	Black / Grey	635/8	Green / Stone Fancy
407/14	Toast Classic Tweed	439	Dark Grey / White	636/5	Green/ Beige Fancy
407/926	Grey Classic Tweed	809	Cream / Green	638/5	Green / Grey Fancy
926	Taupe Classic Solid	878	Beige / White Speckled	5001/1	Green Graduated
782/14	Beige Classic Solid	116/15	Medium Blue / White	5001/7	Moss Graduated
15	White	931	Green / Cream Wide	5011/7	Tan / Green Fancy
15/14	Raw	5347/58	Grey / Wheat Multi	5071/7	Natural / Moss Graduated
4015/91	Raw Speckled	5348/58	Beige / Wheat Multi	5167/5	Green / Grey Fancy
15/1	Beige	5349/930	Beige / Brown Classic	484/3	Green / Yellow Fancy
4215/15	Textured Tan	636/14	Brown Elite Stripe	948/21	Pale / Blue Classic
52	Tan	945/97	Beige Elite Stripe	951/92	Grey / Navy Classic
14	Toast	946/58	Beige / Grey Classic	769/75	Cream / Blue Fancy
12	Yellow	947/14	Pale / Beige Classic	5167/2	Blue / Grey Fancy
53	Pale Peach	949/91	Brown / Beige Classic	636/10	Grey / Blue Graduated
1302	Sage Tweed	959/14	Beige / Toast Elite	641/10	Blue / Beige Fancy
7	Moss Green	959/84	Beige / Brick Elite	5001/13	Blue Graduated
5	Forrest Green	5001/73	Burgundy / Grey Graduated	5348/14	Beige / Grey Multi
407/6	Green Tweed	1101	Beige / Stripe Fancy	5348/79	Grey / Slate Multi
8	Medium Green	636/84	Terracotta Graduated	939/79	Yellow / Grey Elite
13	Ocean Blue	639/99	Tan / Natural Fancy	939/94	Grey Elite Stripe
407/13	Blue Tweed	1120	Brown / Beige Fancy	950/24	Grey / Charcoal Classic
75	Navy Blue	5009/1	Beige / Tan Stripe	967/926	Grey / Charcoal Elite
87	Fancy Blue	5009/14	Brown / Tan Stripe	634/51	Grey / Natural Fancy
79	Grey	5011/57	Tan / Brown Fancy	633/79	Grey / Black Fancy
407/79	Pepper Grey	5072/86	Brown / Stone Fancy		
15/79	Stone	5144/14	Pastel / Natural Fancy		
84	Dark Terracotta	635/11	Cranberry / Natural Fancy		
426	Terracotta	5011/11	Brick / Natural Fancy		
11	Red	5167/11	Red / Grey Fancy		
81	True Brown	5304/15	Rose / Grey Fancy		
73	Burgundy	5173/12	Yellow / Grey Stripe		
		636/12	Yellow Graduated		





RecScreen
5000P

Exterior Screen Fabric
Valance Plus



300 Charcoal / Charcoal

Specifications

Composition: 15% Polyester, 85% Vinyl

Syle: Basket Weave

Mesh Weight: 14,75 (oz/yd²)

Openness Factor: 5.5 %

Fabric Thickness (in): .026

Width: 118"

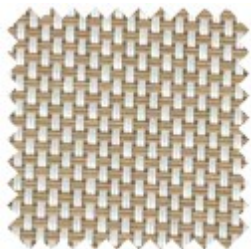
Fire classification: NFPA 701 Test 1, and CA Fire Marshall Title 19, Section 1237.1

Warranty: 5 years exterior

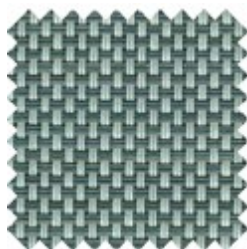
Bacteria and Fungal Resistance: AATCC Test Method 100-2004



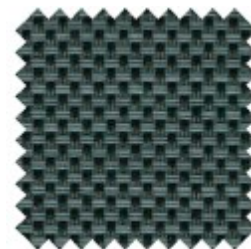
001 White
/ Linen



002 Blanco
/ Sable



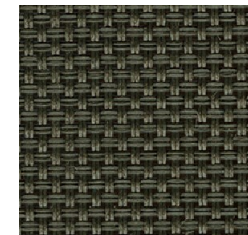
405 Pearl
/ Dark Grey



305 Charcoal
/ Dark Grey



307 Charcoal
/ Bronze



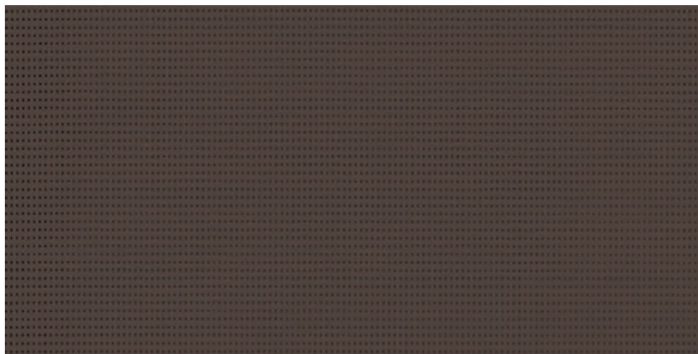
770 Bronze
/ Bronze

Soltis
Horizon 86

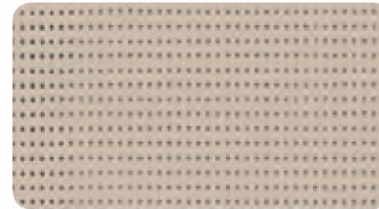
Serge Ferrari

14 % Open Screen Mesh

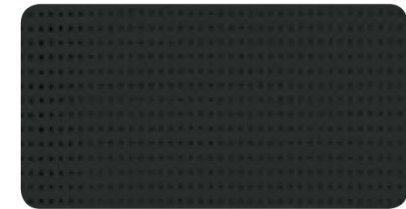
Exterior Screen Fabric
Valance Plus



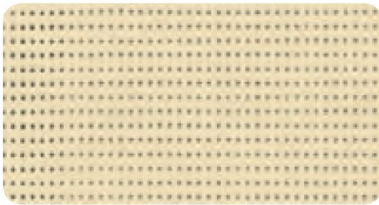
86-2043
Bronze



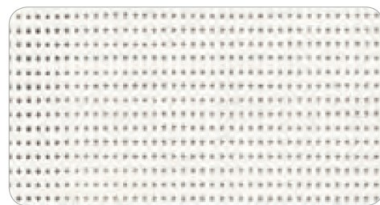
86 – 2135
Sandy Beige



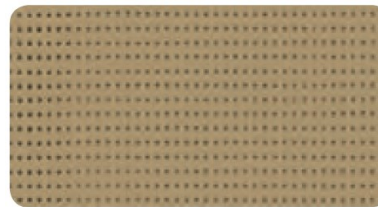
86 – 2053
Black



86 – 2175
Champagne



86 – 2044
White



86 – 2012
Pepper



86 – 2171
Boulder

■ **Technical properties**

Openess factor	14%
Weight	380 g/m ² — 11.2 oz/sqyd
Thickness	0.45 mm — 450 microns
Width	177 cm - 267 cm — 69.7 in. - 105.1 in.

Superior elongation and tear resistance

No deformation during processing and use

Superior aesthetic and mechanical durability

Smooth finish easy to clean, space saving, easy rolling

MOTORIZATION & AUTOMATION



Awnings



Exterior Screens

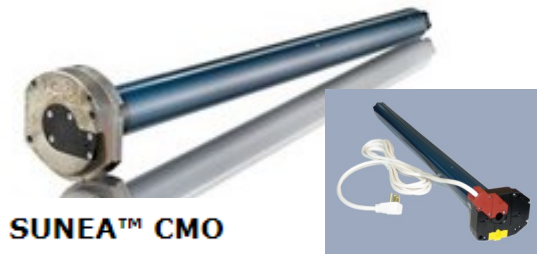


Pergolas



Roller/Solar Shades

Sunair is proud to offer the full line of Somfy motors and controls for our awnings and screens program SOMFY RTS features motors with an integrated radio receiver that allows you to operate the awning by remote control with a wall mounted or hand held remote or by smart phone device. With a simple click of a button on your remote, the awning or shade will extend or retract automatically. The manual override Sunea motor is ideal for awnings and the Altus motors is ideal for exterior screens. Each motor can be configured with a cord & plug which can simply be plugged into your patio outlet. They are available in 11', 17', & 23' lengths.



SUNEA™ CMO



ALTUS®



AVAILABLE BATTERY OPERATED REMOTES



Telis 1 & 4 RTS
Hand-held Remotes



Telis 16 RTS
Hand-held Remote

One (1) through (16) channel hand held or wall mounted remotes are available. Remotes are available in different colors to suit your style, please inquire.

Telis hand-held remotes offer convenient and simple operation of every type of motorized application. Channels help organize the motorized products that are operated. Single channel remotes can operate one individual product or one group of motorized products. Multiple channel remotes can handle groups of motorized products.



Telis 1 Chronis
RTS Timer



DecoFlex WireFree™ RTS
Wall Switches



Telis 1 Patio for
exterior use



Smoove® 1 RTS
Surface Mount Wall Switch

AVAILABLE SENSORS & CONTROLS



EOLIS 3D WIREFREE™ RTS

**Wind sensor for lateral
Arm Awnings only**

The Eolis 3D WireFree™ RTS Wind Sensor is a wireless, battery powered wind sensor that will automatically retract an awning based on wind generated movements.



**SOLIRIS RTS 24V KIT
Sun & Wind Sensor**

The Soliris RTS Sun and Wind Sensor automatically controls your RTS motorized products based on current weather conditions.



**ONDEIS® WIREFREE
Sun & Rain Sensor**

The Rain Sensor is a solar-powered combined rain and sun sensor compatible with Radio Technology Somfy® motorized exterior products, including awnings and screens.

The Somfy myLink™ is a simple device that turns your smartphone or tablet into a sophisticated remote control for motorized products featuring Radio Technology Somfy®, allowing you to operate them whether you're home or not. Combine all the benefits of Somfy's RTS hand-held remotes and timers in a convenient app.



**Sunis & ThermoSunis
Indoor WireFree™ RTS Sensors**



SOMFY MOTOR WIRING

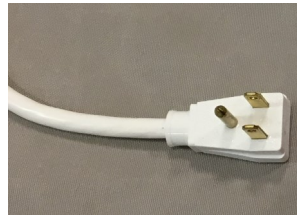


Radio Technology Somfy

Radio Technology Somfy® (RTS) allows wireless radio control of motorized applications via the RTS family of controls.

The three (3) wire cords can be wired in parallel and can be ordered with a molded plug to simply plug into an exterior UL approved GFI outlet. The standard four (4) wire cords must be wired with a traditional toggle wall switch. Screens can not be ordered with molded plugs on the end.

Optional molded plug is available for "awning" motors only



Type of power cable **RTS plug in capable motor cord**

RTS
120V AC / 60Hz
3 conductor cable



white = neutral
black = hot
green = ground

All Somfy Motors are UL and CSA Recognized

- All SOMFY motors are UL Recognized and can be found under the following file numbers:
E60495, E60888, E63714



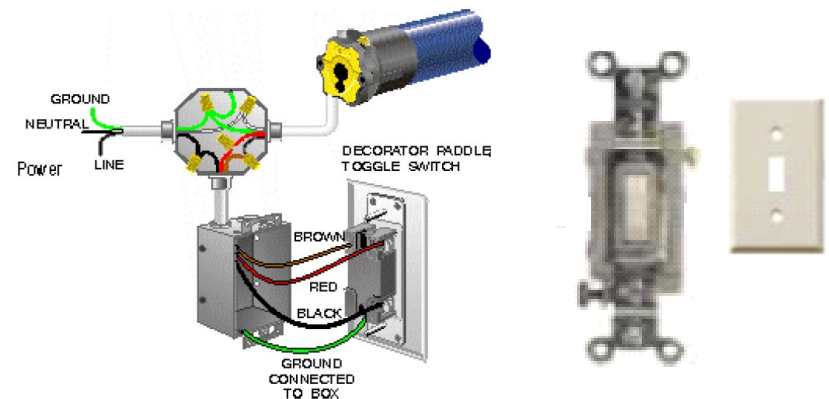
Type of power cable **Hardwire motor cord**

Wired
120V AC / 60Hz
4 conductor cable

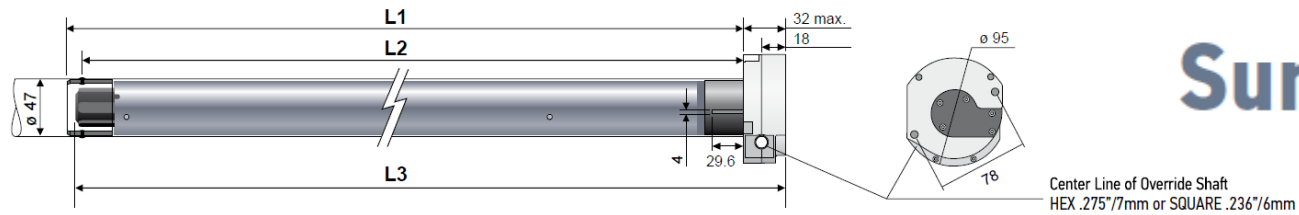


white = neutral
red = direction 1
black = direction 2
green = ground

Hardwired motors with a wall switch



Dimensions



Sunea® RTS CMO

525A2 CMO

25 Nm

120V / 60HZ

1.6A

20 rpm

535A2 CMO

35 Nm

120V / 60HZ

2.1A

20 rpm

550R2 CMO

50 Nm

120V / 60HZ

2.1A

14 rpm

660

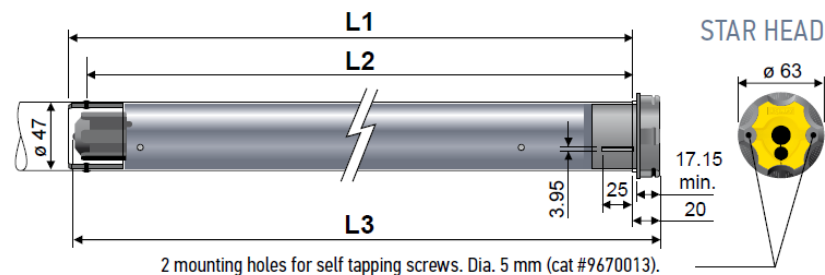
60 Nm (530 in. lbs.)

120V / 60Hz

2.5A

14 rpm

Dimensions



LT50 Altus® RTS

506

6 Nm

120V / 60HZ

1.1A

38 rpm

510

10 Nm

120V / 60HZ

1.3A

38 rpm

525

25 Nm

120V / 60HZ

1.6A

20 rpm

535

35 Nm

120V / 60HZ

2.1A

20 rpm

550

50 Nm

120V / 60HZ

2.1A

14 rpm

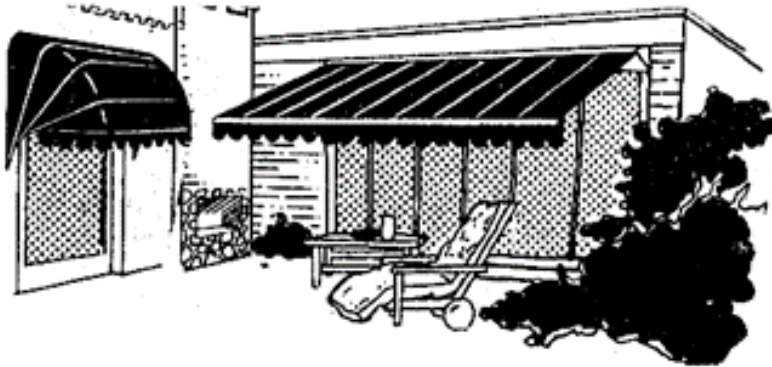
SUNAIR® AWNING MOTOR



We offer a “Sunair” branded motor with our Sunair® & Sunstar® awning model awnings which is more economical. This motor is a 50 Nm radio RTS motor and is available on the above two models only. Maximum width using this motor is 28 ft. wide. This motor comes includes an 18’ plug in cord and a one channel hand held remote. Somfy remotes and electronic controls are compatible and can be added.

Notes

Note: Sunair® reserves the right to change engineering, specifications, and prices without notice.
Images and Illustrations in the catalog may vary from digital and printed manuals.



SUNPROOFING AMERICA!



MARYLAND LOCATION

Mailing: P.O. Box 1068
Shipping: 7785 Rt. 175
Jessup, MD 20794

Toll Free 800 - 548 - 0408
Phone: 410 - 799 - 1145
Fax: 410 - 799 - 5584

ARIZONA LOCATION

Mailing: Same as Jessup
Shipping: 3807 West Thomas Rd.
Phoenix, AZ 85017

Toll Free 877 - 272 - 3920
Phone: 602 - 272 - 3920
Fax: 602 - 272 - 3925

www.sunairawnings.com

info@sunairawnings.com